

# Heritage Happenings



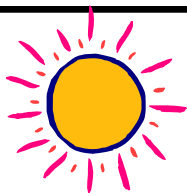
Woodbury Heritage Society

Volume 28 No. 41 Spring 2011

## News and Notes:

- Page 1-Heritage Village update
- Page 3-Woodbury Academy
- Page 3-Pot Luck Holiday Dinner
- Page 4-Wayne's World
- Page 4-Important message from Sheila
- Page 5- Renew you membership, see page 5 for renewal form.
- Page 6-Check your mailing label for the dreaded **X**

Click on the WHS website for the latest information.  
[www.woodburyheritage.org](http://www.woodburyheritage.org)



We are very pleased to announce that Shirley Walker is our new Sunshine Coordinator. Please call Shirley if you have news about members, please let Shirley know at: 651-731-3928 Cell 612-849-2007 or email [skwalker@usfamily.net](mailto:skwalker@usfamily.net)

## Heritage Village Still Alive



*The Miller Barn is located in the Valley Creek Open Space*



*Barn interior shows the post, beam and peg construction of the early Woodbury barns.*

At the request of the WHS Board a meeting was held with Clinton P. Gridley, City Administrator and Robert Klatt, Park and Recreation Director on January 10<sup>th</sup>. Representing WHS were John Seemann, Kathryn Ho, Wayne Schilling and Bill Schrankler. The purpose of the meeting was to ascertain the possibility of locating the proposed Heritage Village on the site of the Miller

farmstead. The farmstead is located within the Valley Creek Open Space just northeast of the intersection of Valley Creek Road and Settlers Ridge Parkway. The city has various buildings and properties with which no decision has been reached for their development or future use. In order to familiarize the stake holders, a tour will be conducted of various open spaces on Tuesday, April 5, 2011 and members of the WHS Board have been invited to attend along with members of the City Council and Parks Commission. The tour will leave City Hall at 5:30 p.m.. The tour will include the Afton Road Baptist Church (former Woodbury Community Club),



*Bielenberg farm house. Orville Bielenberg was the first mayor of Woodbury*

Kargel House, Dale Road House, Valley Creek Barn as well as the Public Safety Building.

This is an opportunity to persuade the Mayor, the City Council and Park Commission that the best use of the Miller site would be to establish the Woodbury Heritage Village there. The village would initially include the Miller

(Valley Creek Barn) Barn, the Bielenberg farm house, Woodbury's first post office, and District 28 School.



*Woodbury's first post office.*



*District 28 School or was also known as the Schilling School*

A landscape architect has been hired by the WHS Board to make a rendition of what the village would look like in the site.

Society members and others who believe that the Heritage Village would be an excellent venue to help educate the citizens of Woodbury regarding the city's rural past are invited to contact the Mayor, Council Members and Park Commission members to express their support. Listed below are the members of the above groups.



## Woodbury's Mayor and City Council

### Members

#### Mary Giuliani Stephens

Mayor

1233 Shannon Court  
Woodbury, MN 55125  
(651) 739-1242

#### Christopher Burns

Council Member

3611 Dakota Avenue  
Woodbury, MN 55125  
(612) 718-1497

#### Julie Ohs

Council Member

577 Eagle Ridge Road  
Woodbury, MN 55125  
(612) 414-3204

#### Paul Rebholz

Council Member

9355 McIntosh Road  
Woodbury, MN 55125  
(651) 735-7864

#### Amy Scoggins

Council Member

3336 Northview Lane  
Woodbury, MN 55125

You may send an e-mail to the City

Council at

[council@ci.woodbury.mn.us](mailto:council@ci.woodbury.mn.us).

## 2011 Parks and Recreation Commission Members

#### Lynne Markus, Chair

9175 Pinehurst Road  
Woodbury, MN 55125

#### Nicholas Alfano

3354 Richmond Bay  
Woodbury, MN 55129

#### Brent Brommer

9052 Hidden Meadow Road  
Woodbury, MN 55125

#### John Chikkala

1722 Lamplight Court  
Woodbury, MN 55125

#### Denny Grubish

356 Pendryn Hill Curve  
Woodbury, MN 55125

#### Tracy Petersen

2107 Eagle Trace Lane  
Woodbury, MN 55129

#### Michael Schwartz

6164 Oakwood Road  
Woodbury, MN 55125

The WHS thanks you in advance for your support in this most important endeavor.

*Heritage Happenings* is distributed quarterly by the Woodbury Heritage Society

President –John Seemann

Vice President-Wayne

Schilling

Secretary-Patty Minehart

Treasurer-Richard Pribnow

Special thanks to Kathryn Ho for proofreading the *Heritage Happenings*. It is with her help that this issue is minus many errors.

*Heritage Happenings* is edited and published by Bill Schrankler. Contributions from members and other interested parties are welcomed. Contact Bill at 651.738.1836 or email: [bschrankler@comcast.net](mailto:bschrankler@comcast.net). Email or snail mail is preferred in the interest of accuracy. 6821 Lydia Lane Woodbury, MN 55125

Click on the WHS website for the latest information.

[www.woodburyheritage.org](http://www.woodburyheritage.org)



## WHS Spotlighted at the Academy



Kathryn Ho



Bud Urtel



Lorraine Rath and  
Emily Wolterstorff

No, it wasn't the 83rd Academy Awards in Hollywood, but rather the third session of the Woodbury Academy. This third session which focused on the history and geography of Woodbury was held on the evening of February 17<sup>th</sup> in the historic old United Methodist Church on Steepleview Road. Lorraine Rath provided the 28 participants with a rich history of the church. Bill Schrankler covered the geography of Woodbury and gave an overview of the city's historic barns and schools. Kathryn Ho traced the history of Woodbury and its historical antecedents. In addition, Kathryn entertained the group with interesting stories about the pioneers of early Woodbury and the making of a pioneer yo-yo. The session concluded with Lorraine Rath, Emily Wolterstorff and Bud Urtel sharing their memories of yesteryears in Woodbury.

### Annual Holiday Pot Luck Dinner

The annual member's holiday pot luck dinner was held on Sunday January 6, 2011. The event was held at St. John's Lutheran Church. Bud Urtel, a longtime member, was honored at the event as he was celebrating his 90<sup>th</sup> birthday. Those in attendance wished Bud many happy returns. Remember Bud as Charles Schulz said "Life is like a ten-speed bicycle. Most of us have gears we never use."

After a short business meeting, a most stimulating program was presented by Brent Peterson, Executive





**Rita and Bruce Pottoff enjoying the great food**



**Brent Peterson**



**No shortage of food**

Director of the Washington County Historical Society. He narrated and provided extensive background information regarding the John Runk DVD entitled "An Ode to Stillwater: The John Runk Films".

Two years ago, the Washington County Historical Society (WCHS) received an extensive collection of 8mm and 16mm motion film from the collection of John Runk, the prolific Stillwater photographer who extensively documented Washington County life during much of the 20th century.



### **In Memoriam**

We offer our sympathies to the family and friends of the Ferd Stutzman.

Ferd Stutzman was a founding member of the Heritage Society and his incredible memory was often put to use when looking for accurate information about the past.



## **Wayne's World**



- John Colby, an early pioneer in Woodbury is a Civil War oddity. Mr. Colby left Woodbury to fight for the Confederacy during the Civil War. He was captured by the Union Army and was placed in a POW Camp. He subsequently was released to return to Woodbury under the condition that he would no longer take up arms against the North. He returned to Woodbury and was received as a "persona non grata" by his neighbors. Colby Lake is named after him.
- Why are many coin banks shaped like pigs? Answer: Long ago, dishes and cookware in Europe were made of a dense orange clay called 'pygg'. When people saved coins in jars made of this clay, the jars became known as 'pygg banks.' When an English potter misunderstood the word, he made a bank that resembled a pig. And it caught on.



*Editor's note: Wayne Schilling is solely responsible for the content and veracity of this article.*

*Look for more of Wayne's World in the next issue.*

**Attention:** If you have an interest in genealogy, preserving history and the love of old buildings and farmhouses, please consider joining the Woodbury Heritage Society as a board member. Our focus is keeping the history (past and future) alive in Woodbury for future generations to come! You don't even need to have

grown up in Woodbury....just a passion for history. We participate in many activities in the county...just to name a couple: quarterly members meetings, the "little white house" at the corner of Lake Road and Radio Drive where we have our summer open houses and school tours...plus the opportunity to meet lots of great folks! If you're interested, please call President John Seemann at 651-738-3675 or Vice President Wayne Schilling at 651.459.4063  
Sheila Rath's Hause, Board Member

