

Heritage Happenings



Woodbury Heritage Society

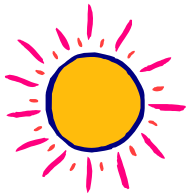
Vol. 30 no. 3 Winter 2013

Heritage Happenings is distributed quarterly by the Woodbury Heritage Society

Board Members

President –
Wayne Schilling
Vice President-
Ruth Duncan
Secretary-Patty Minehart
Treasurer-John Seemann
Directors:
Dick Bielenberg
Barry Brown
Shelia Rath's Hause
Don Lindeman
Gordon Minehart
Bill Schrankler

Click on the WHS website for the latest information.
www.woodburyheritage.org



Shirley Walker is our Sunshine Coordinator. If you have news about members, please let Shirley know at:
651-731-3928
Cell 612-849-2007
or email
skwalker@usfamily.net

WHS Rolls Out New Book



Afton: Chicago, Milwaukee, St. Paul and Pacific Railroad Depot Built 1883



Afton Depot circa 1930



Stillwater: Chicago, Milwaukee and St. Paul Freight House and Depot Built: 1882

Wayne Schilling, president of the Woodbury Historical Society stated we take pride in the launching of *Shadows of Time*. "This is a thorough, well documented study filled with great present and past images of Minnesota's existing railroad depots," he said. Schilling also pointed to the book's endorsements by prominent railroad historian John C. Luecke, who observes, "...it is a must for any student of Minnesota railroad history," and Dave Hartjie, executive director of the Minnesota Transportation Museum, who notes, "I would recommend this book to both the serious railfan and curious history buff. It is informative and enjoyable to read." Former Governor Wendell R. Anderson, who also praised the volume, wrote its foreword.

The oversize (9 1/2" x 11") coffee table styled book covers in detail 168 of Minnesota's existing railroad depots and features the 53 now on the National Register of Historic Places. Entertaining and fact filled, with hundreds of photographs, maps and other images, the narrative provides a fresh look at Minnesota railroad history through brief studies of

continued on page 2

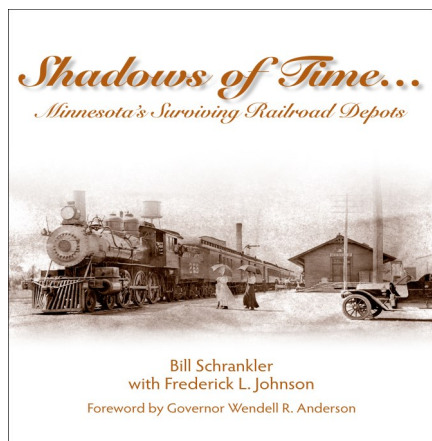
(continued from page 1)

these aging train depots.

WHS Board member Bill Schrankler is the author and photographer. This is former educator Schrankler's first venture into this genre.

He served as school principal in the St. Paul Public Schools from 1963 through 1994, having worked earlier as a classroom teacher and as a pioneering Twin Cities Public Television science teacher. Schrankler worked with noted Minnesota historian and author Frederick L. Johnson, who added historical interpretation and text.

Bill will be the speaker at the Holiday Pot Luck event on January 12, 2014. He will tell of his adventures in writing the book and provide interesting stories about the depots. Many unknown depot and train facts will be revealed through a slide presentation. The audience is invited to share their depot memories. The event will be at 12:30 pm at the St. John Lutheran Church, 1975 St Johns Drive. Please bring a dish to share.



Ordering information at
www.woodburyheritage.org, click on
publications.

Apron Fashion Show Hosted by Emily Wolterstorff



In November 2013, longstanding member Emily Wolterstorff hosted an apron fashion show at Stonecrest. The show featured current, vintage and antique aprons modeled by Stonecrest residents. There were a number of beautiful and evocative aprons, handed down from mother to daughter including gingham with rickrack trim, holiday aprons and an apron that Emily designed and sewed for her parent's anniversary party.

Emily told the story of the apron with the floral pattern pictured at right, made, along with matching dish towels, from a feed sack.

She said that farmers were often sent with instructions when they went to the feed store, to bring home matching bags.

The aprons and the stories of mothers and kitchens and special meals were well received. The fashion show was especially nice as it allowed the audience to participate by reaching out and rubbing the fabrics between their fingers, as women love to do.



Patty Minehart

Brown Family Granite Bench



The Brown Family Bench located by the circular drive of Christ Episcopal Church at 7305 Afton Road. It is dedicated to Bill and Helen Brown who farmed that land. Not shown in the photos is an inscription on the bench listing Bill and Helen's children. Four of the children (and their spouses) currently reside in Woodbury; brothers Barry, Bill, Rufus and sister Sara Jane Brown Minehart. Another sister, Judy Brown Dailey and her husband, Dennis, initiated the project in 2010 for their 50th wedding anniversary.

Sara Jean Minehart



Photos from Woodbury Days 1985 were in my mom's scrapbooks at my house. The riders from left to right are Pat Metzger, Melford Metzger and Orris Schilling (WHS Pres. Wayne Schilling's father). The car is a nice older Pontiac.

A trip through history

with Dick Bielenberg



Richard W. Pribnow



Our good friend and fellow board member passed away unexpectedly on August 7, 2013. Richard came from a pioneering Woodbury family. A long time member of the Woodbury Heritage Society, he served in many roles including a long tenure as the

Society's treasurer. In addition, Richard was a valuable resource with his extensive knowledge of plants and farming implements. He contributed many artifacts that had been in his family which enriched our collections. Richard was an active and lifelong member of the Woodbury United Methodist Church serving as Treasurer of the cemetery. He is survived by wife of 32 years, Della and many friends and relatives. Our condolences to Richard's family, he is missed.

Bill Schrankler

Woodbury Heritage Society

8301 Valley Creek Road
Woodbury, MN 55125
651.714.3564



**Members Holiday
Pot Luck Dinner**

Sunday, Jan. 12, 12:30 pm
St. John Lutheran Church,
1975 St Johns Drive
Please bring a dish to share

Program
Shadows of Time...
Minnesota's Surviving Depots
With
Bill Schrankler

APPLICATION FOR MEMBERSHIP 2014

(Please print)

Name: _____

Address: _____

City: _____ State _____ Zip _____

Phone: _____ Email _____

**MEMBERSHIPS ARE BASED
ON THE CALENDAR YEAR AND
MUST BE RENEWED**

MEMBERSHIP CATAGORY (Check appropriate box)

☐ \$10 per individual (Annual Dues for the Calendar Year)

☐ Additional Gift

Donations are tax deductible

A membership card will be forwarded to you.

Send application & check or money order to:

*Woodbury Heritage Society
John Seemann, Membership Chair
City Hall
8301 Valley Creek Road
Woodbury, MN 55125*