

# Heritage Happenings



Woodbury Heritage Society

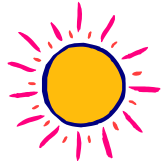
Vol. 31 no. 1 Summer 2014

*Heritage Happenings* is published three times each year by the Woodbury Heritage Society

## Board Members

President –  
Wayne Schilling  
Vice President-  
Bill Schrankler  
Secretary-Patty Minehart  
Treasurer-John Seemann  
Directors:  
Dick Bielenberg  
Barry Brown  
Dick Fields  
Shelia Rath's Hause  
Don Lindeman  
Gordon Minehart  
Margaret Wachholz

Click on the WHS website for the latest information.  
[www.woodburyheritage.org](http://www.woodburyheritage.org)



## ATTENTION MEMBERS

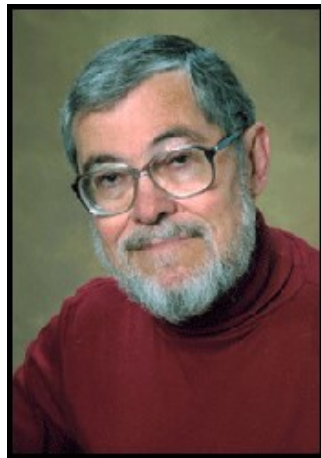
The Heritage Society needs a new Sunshine Lady or Gentleman. This person will send a bereavement card to the family of a member who has passed away or a get-well card to one who is ill.

## Author Glenn Ickler to Speak

**AUTHOR GLENN ICKLER TO SPEAK ON  
1940s AND '50s WOOBURY  
Or**

*Growing Up Alone: Can An only Child From Woodbury Survive In The Literary World*

**AT SEPT. 3 HERITAGE SOCIETY MEETING**



Glenn Ickler was born in a small house on Military Road in Woodbury in the days before blacktop streets and dial telephones. As an only child in a farming area he had very few playmates, but his parents kept him busy picking apples and

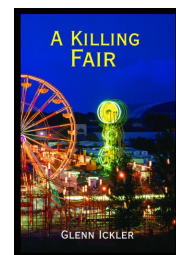
raspberries and feeding a flock of chickens. Glenn went through grades one through eight at the District 28 School, which was two miles away on Bailey Road. He walked to school until he was big enough to ride a single-speed bike on gravel roads. He graduated at both the top and bottom of his class, having been the only pupil in the eighth grade. He had the biggest collection of comic books in Woodbury, and at lunch time during the winter he would tell the stories to other kids. Previous District 28 graduates had gone to high school in St. Paul, but Glenn was the first to attend St. Paul Park. There he met Dick Gardner, who also lived on Military Road, but on the Newport side of the line. Together they wreaked havoc as a performing comedy team and authors of a column ("The Peculiar Press") in the school paper. After graduation, Glenn went to Hamline University, where he majored in Theatre and English. His writing and

storytelling career continued as he became editor of the Hamline literary magazine and sports editor of the student newspaper. He also became engaged to Joanne Larson, a beautiful blond farm girl from southeastern Minnesota. Faced with the military draft upon graduation from Hamline, Glenn enlisted in the Navy's officer candidate program. He was commissioned as an ensign, married Jo and went on four years active duty as an airborne combat intelligence office.

Back in civilian life, Glenn was hired as farm editor of the *Winona Daily News* in Winona, Minnesota. Two years later he moved up to the *St. Paul Dispatch*, where he worked as a reporter, feature writer, columnist, editorial writer and associate editor for 22 years. He and Jo settled in Afton where they raised four boys, survived two floods and led a 4-H club. Glenn served two terms as mayor of Afton and was instrumental in bringing Afton Township into the City of Afton.

In 1983 Glenn was offered a job as editorial page editor of the *Middlesex News* in Framingham, Mass., so he and Jo, who were empty nesters by that time, moved to New England. Upon retiring in 1999, Glenn began writing a series of mystery novels starring a newspaper reporter and photographer duo who become overly involved in the crime stories they're covering. The tenth book, "A Killing Fair," was released in June.

*Glenn Ickler's presentation begins at 6:30 pm at the Woodbury Central Park amphitheater. He will be on hand to sign copies of his latest book, "A Killing Fair," afterward.*  
Carol Hall





**HERITAGE HOUSE GAINS BEEHIVE**

Beekeeping was fairly commonplace on farms in the early years of our country. In accordance, a beehive is in now place on the lawn behind the

Heritage House. A Langstroth hive, it was invented in 1852, and is still in use today. It will be on display for summer viewing.

Although honeybees are not native to North America, they were an early import and came westward with settlers. In fact, swarms of feral honeybees often were the first warning sign of advancing settlers. Some Native Americans called them the white man’s fly.

Bees generally were acquired when a neighbor’s bees swarmed. (A swarm occurs when the bees have outgrown their home and half of them leave with a queen to find a new home.)

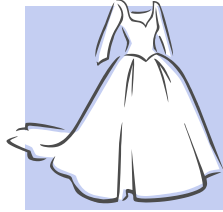
The stuff of beekeeping has not changed very much through the years. A vintage photo of a beekeeper in her apiary is on display in the Heritage House. Although the photo is old, the clothes and equipment would not be out of place in a bee yard today. Thank you to Wayne and Betty Schilling who donated the beehive.

*Patty Minehart*



**Got a red “X” on your address label?**

This mark indicates that your 2014 dues have not arrived. Your dues are a major financial support of the Heritage Society. Please send in your dues — as soon as possible. Your help is needed! See last page for help with this important ask.



**THANK YOU, RUTH DUNCAN**

The wedding dress

Catherine Murphy wore when she married George Rath in 1893 is now on display at Heritage House along with the

couple’s formal wedding photograph. What’s unusual about this dress is that it is brown and not white or ivory as most wedding dresses were at that time.

Ruth Duncan, who is Catherine’s granddaughter, donated the dress to the Heritage House.



*Ruth helping children learn about the early history of Woodbury*

**RUTH DUNCAN RESIGNS FROM HERITAGE SOCIETY BOARD OF DIRECTORS**

The board accepts with regret the resignation of long-time member and vice president, Ruth E. Duncan (nee Rath). Ruth is a passionate advocate of the early history of Woodbury. She has shown great dedication to the preservation of the Heritage House, in particular, organizing the annual Rath family gathering to decorate the house for Christmas.

In her letter of resignation, Ruth encourages us all to “please volunteer, and you will understand how important and how much fun this truly is.” We send Ruth our affection and grateful thanks.

*Carol Hall*

## INTRODUCING NEW BOARD MEMBERS

### Richard “Dick” Fields



The Woodbury Heritage Society Board of Directors is pleased to announce the appointment of Richard “Dick” Fields to the board. Dick was installed at the spring meeting, and replaces outgoing member Ruth Duncan. A Woodbury resident since 1964, Dick spent his career with 3M.

Starting in 1960 as a research chemist, Dick moved into research management and business management. He was elected to 3M’s Carleton Society, which is the corporate technical Hall of Fame. Dick also served as associate professor at the University of Minnesota Dental Materials Dept. from 1991 to 2005.

Woodbury Mayor Orville Bielenberg appointed Dick to serve on Woodbury’s first park board. The board, which was formed in the 1960s, named the existent parks with the Indian names they have still today.

When they settled here 50 years ago, Dick, his wife Mary and their four children moved into the Woodbury Heights Addition. The kids went through District 833 school system, graduating from Park High and then Woodbury High when it was built. Dick has been a Heritage Society member for eight years.

### Margaret Wachholz

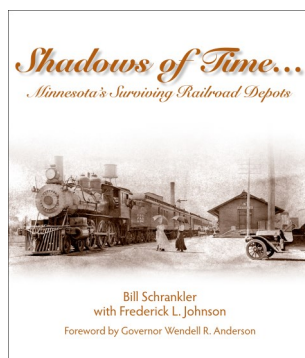


The Woodbury Heritage Society Board of Directors is also pleased to announce the appointment of Margaret Wachholz to the board. Margaret, her husband Rick and their three children are 20-year residents of Woodbury. They make their home in the “new farm house” on the Calderbert dairy farm,

which was constructed in 1939. Margaret works with the elderly at Woodbury Senior Living. Rick teaches school in Stillwater.

In her own words Margaret says, “I hail from the old county of Ireland, the country of sad song and witty story. There, we all gather with our elders to swap tales; we love to capture the sounds, smells and the feel of the past. I’m enjoying being with the members of the WHS because they are focused upon the whistling winds of history as well. . . I am looking forward to working hard, learning more and meeting you all.”

## WHS BOOK SELLING WELL



The book *Shadows of Time..Minnesota’s Surviving Railroad Depots* published by the WHS and authored by member Bill Schrankler. WHS sold over 300 copies to date.

The oversize (9 ½” x 11”) coffee table-styled book covers in detail 168 of

Minnesota’s existing railroad depots and features the 53 now on the National Register of Historic Places. Entertaining and fact filled, with hundreds of photographs, maps and other images, the narrative provides a fresh look at Minnesota railroad history through brief studies of these aging train depots. Books are available on line at: <http://shadowsoftime.weebly.com/>

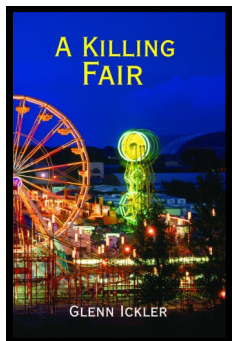
## New Heritage Happenings Editor

President Wayne Schilling is please to welcome Carol Hall as the newsletter’s new editor. Carol is an experienced journalist whose expertise will do much to enhance the quality of our newsletter.

*Heritage Happenings* is edited by Carol Hall and published by Bill Schrankler. Contributions from members and other interested parties are welcomed. Contact Carol’s email: [earlcarolhall@q.com](mailto:earlcarolhall@q.com). Email or snail mail is preferred in the interest of accuracy. 2631 Oak Ridge Trail Woodbury, MN 55125

**Woodbury Heritage Society**

8301 Valley Creek Road  
Woodbury, MN 55125  
651.714.3564



**WHS Members and Friends Meeting**

***Growing Up Alone: Can An only Child From Woodbury Survive In The Literary World***

Glenn Ickler’s presentation begins on Wednesday, September 3, 6:30 pm at the Woodbury Central Park amphitheater. He will be on hand to sign copies of his latest book, “A Killing Fair,” afterward.

---

## APPLICATION FOR MEMBERSHIP 2014

(Please print)

Name: \_\_\_\_\_

Address: \_\_\_\_\_

City: \_\_\_\_\_ State \_\_\_\_\_ Zip \_\_\_\_\_

Phone: \_\_\_\_\_ Email \_\_\_\_\_

**MEMBERSHIPS ARE BASED ON THE CALENDAR YEAR AND MUST BE RENEWED**

**MEMBERSHIP CATAGORY (Check appropriate box)**

\$10 per individual (Annual Dues for the Calendar Year)

Additional Gift

Donations are tax deductible

A membership card will be forwarded to you.

*Send application & check or money order to:*

*Woodbury Heritage Society  
John Seemann, Membership Chair  
City Hall  
8301 Valley Creek Road  
Woodbury, MN 55125*